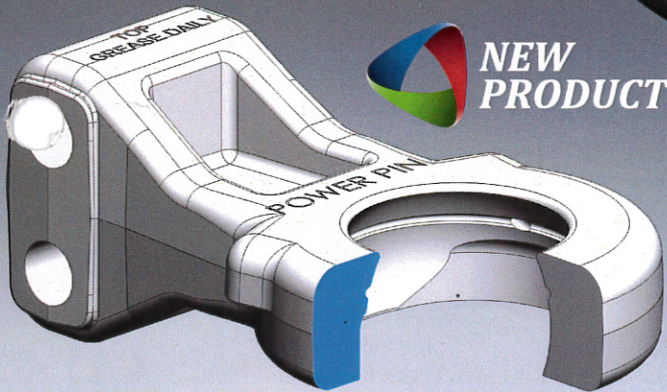
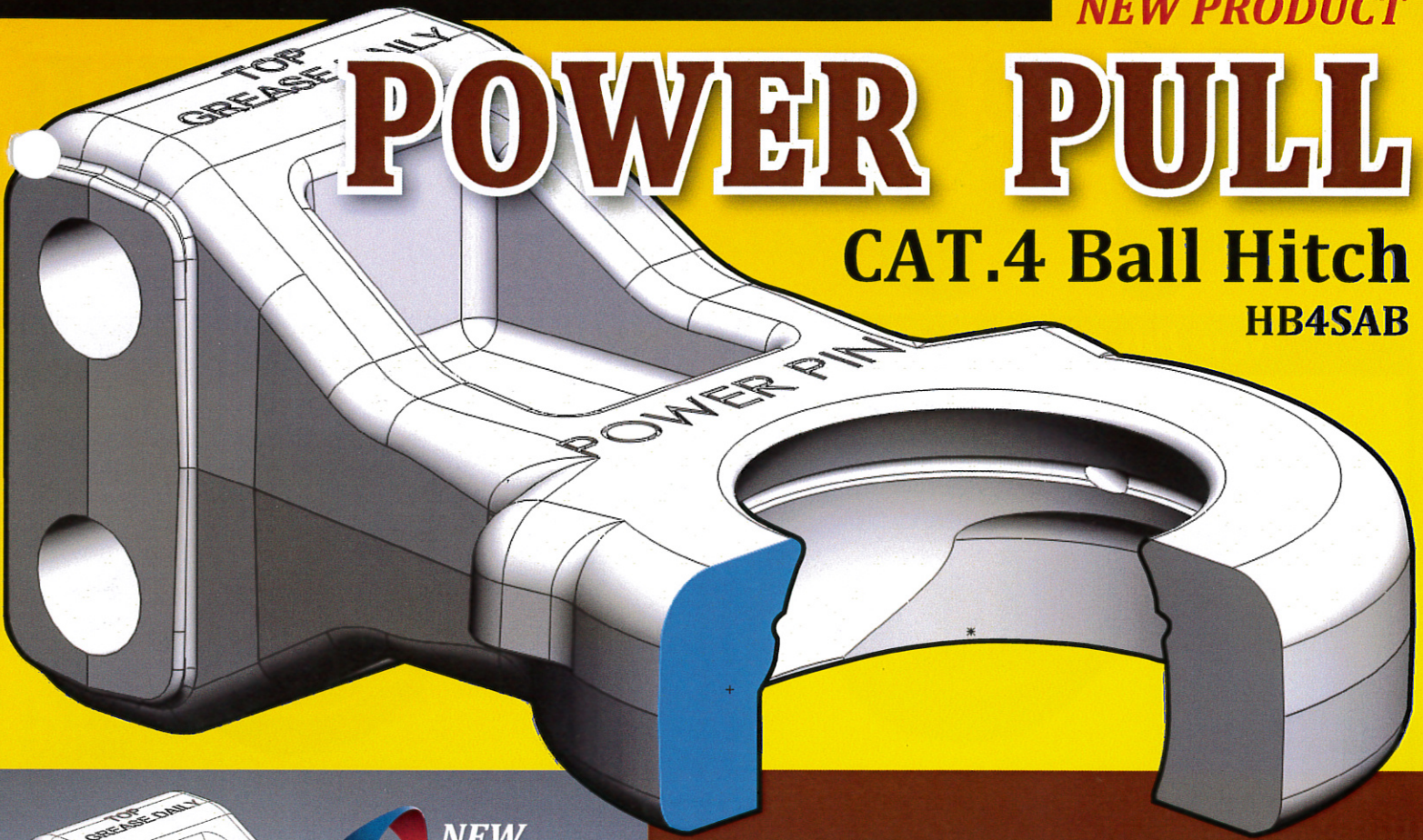


NEW PRODUCT

POWER PULL

CAT.4 Ball Hitch

HB4SAB



NEW PRODUCT

Ball Hitch Cross Section Comparison

POWER PULL CAT.4 HB4SAB

Max cross section of 2.19 sq. in.

2.19 x 125 ksi yield = 273,750 lbf

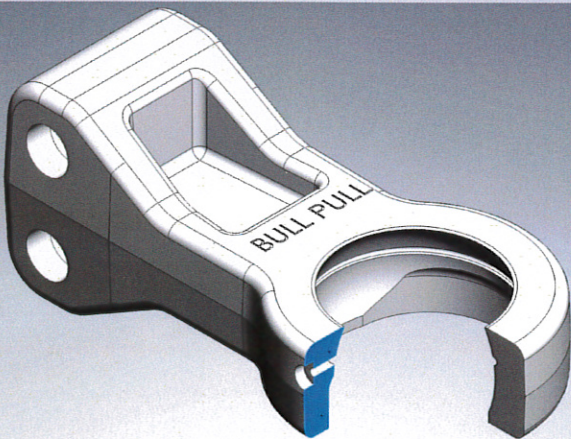
75% STRONGER

than:

BULL-PULL CAT.4 BP-CAT4

Approx. cross section of 1.25 sq. in.

1.25 x 125 ksi yield = 156,250 lbf

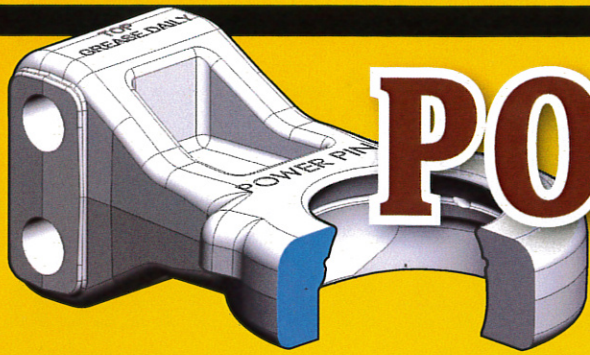


THE CTD GROUP

If you use hitches, consider these CTD products as well:



NEW PRODUCT



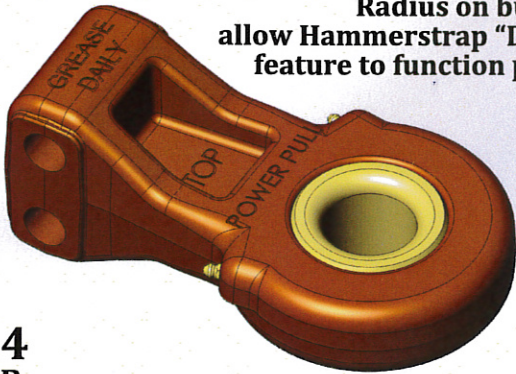
POWER PIN

**CAT.4 Ball Hitch
HB4SAB**

**OR CAT.5 Ball Hitch
HB5SAB**

New Power Pin Design

Radius on bushing to allow Hammerstrap "Drop Pin" feature to function properly.



**CAT.4
HB4SAB**

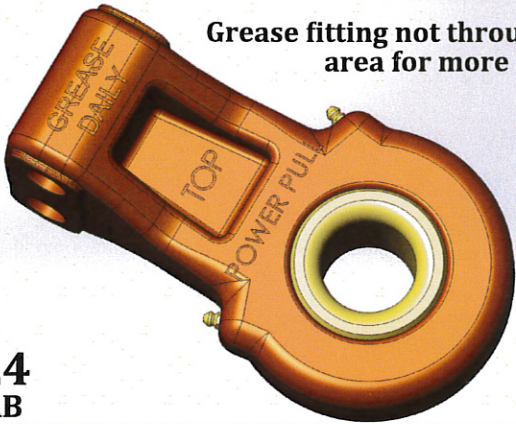
New Power Pin Features

Grease fittings are located for installation of Automatic grease applicator (optional).



**CAT.4
HB4SAB**

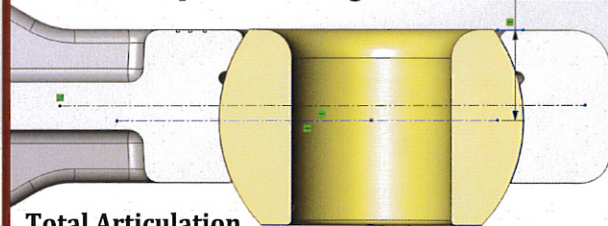
Grease fitting not through shear area for more strength.



**CAT.4
HB4SAB**

Articulating Ball is offset for additional - 2.0 sq. in of surface area for higher vertical loads.

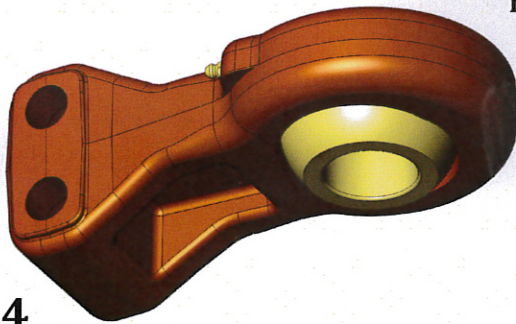
*No tools required to change out ball. 1.18 IN. BALL SURFACE AREA FOR VERTICAL LOADS



Total Articulation
POWER PIN HITCH - 45 degrees roll & pitch.
OTHER - 35 degrees roll & 40 degrees pitch.

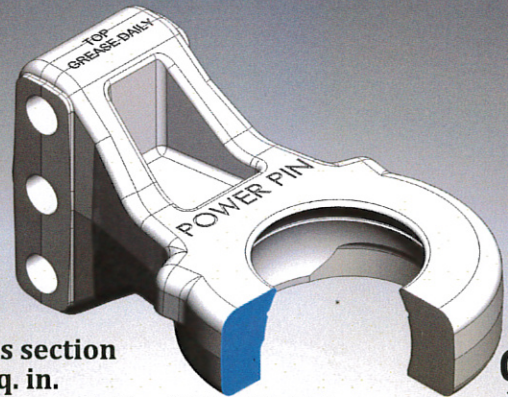
**CAT.4
HB4SAB**

No additional bushing required.



**CAT.4
HB4SAB**

Max Cross section of 3.16 sq. in.
3.16 x 125 ksi yield = 395,000 lbf



**CAT.5
HB5SAB**



**THE
CTD
GROUP**

If you use hitches, consider these CTD products as well:

